



# Introducing the 2021 APEEE board

Click on the picture for more information



## **PRESIDENT**

Giles Houghton-Clarke

*Groups: CEES, Canteen, IT, Health Safety and Security, Communication and Welcome committee, Budget, Compliance & risk assessment  
SV Section*



## **VICE-PRESIDENT ADMINISTRATIVE AFFAIRS**

Roberta Maggio

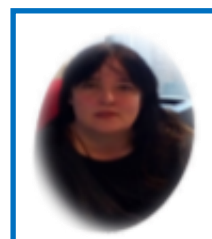
*Groups: CEP&M, Canteen, Transport, Extra-curricular activities, Budget, Compliance & Risk assessment  
IT Section*



## **VICE-PRESIDENT PEDAGOGICAL AFFAIRS**

Michael Teutsch

*Groups: Interparents, Educational Support  
DE Section*



## **TREASURER**

Vanessa Aulehla

*Groups: Interparents Delegate, Coordinator Budget, CEES, Canteen, Transport, Extra-curricular activities, Communication and Welcome committee, Active school community, Educational support  
IT Section*



## **SECRETARY**

Andrea Grgić

*Groups: Canteen, Health, safety and security, Budget, Active school community, Compliance & risk assessment  
NL Section*



## **SECRETARY OF INFORMATION**

Natalia Karpenko

*Groups: CEP&M, Coordinator Communication and Welcome committee  
NL Section*

Click on the picture for more information



### **BENGT DAVIDSSON**

*Member of the Bureau, Interparents Delegate,  
Coordinator Health, Safety & Security, Member of  
WG Transport, WG CEP&M and  
WG Risk and Compliance  
SV Section*

### **TATIANA ALMEIDA**

*CEP&M, Canteen, Health, Safety  
& Security, Educational support  
PT Section*

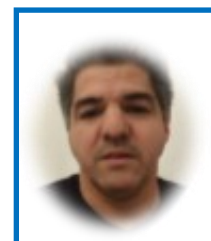


### **ONA KOSTINAITĖ-GRINKEVIČIENĖ**

*CEP&M, CEES, Budget  
LT Section*

### **SEBASTIAN GUERRERO**

*Coordinator Extracurricular  
activities, Coordinator IT, CEP&M  
FR section*



### **PIM GESQUIERE**

*CEES, Canteen, Transport, Extra-curricular activi-  
ties, Health, Safety & Security, Budget, Active  
School Community, Compliance & risk assessment  
NL Section*

### **ANNA GRÖMER**

*Transport  
DE Section*



### **SZILVIA KALMAN**

*Interparents, Coordinator CEES, Educational  
Support, Compliance & risk assessment  
FR Section*

### **RAQUEL JIMENEZ LOPEZ**

*Interparents, Coordinator Educational Support, CEES,  
Health, Safety & Security  
FR Section*



### **CATARINA DUARTE GOMES**

*CEES, Budget, IT, Health, Safety & Security,  
Communication and Welcome Community  
PT Section*



Click on the picture for more information



### **MINNA MELLERI**

*Interparents, CEES, Coordinator Transport, Coordinator  
Enrolment Policy  
FI Section*



### **JOHANNA SCHULYOK**

*Coordinator CEP&M, Canteen, Health, Safety and  
Security, Communication and Welcome committee  
SV Section*



### **MARJO TOIVO**

*CEP&M, Canteen, Health, Safety & Security,  
Communication and Welcome committee, Active  
School Community  
FI Section*



### **ANNA YAVORSKA**

*Interparents, Coordinator Active school community,  
CEP&M, Budget, Compliance & risk assessment,  
Coordinator Digital Privacy awareness  
EN Section*

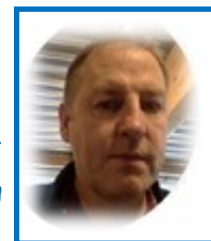
### **CHRISTINE PYKA**

*CEP&M, Canteen, Transport  
DE Section*



### **KEVIN SMITH**

*CEES, Coordinator Canteen, IT, Budget  
EN Section*



### **DAVID ZELINGER**

*Interparents, CEES, IT, Communication  
and Welcome committee, Enrolment policy  
DE Section*





## [Back to the Top](#)

*or click on the picture to come back to the Top page*



**Giles Houghton-Clarke** - [giles.houghton-clarke@woluweboard.eu](mailto:giles.houghton-clarke@woluweboard.eu)

I have two daughters who have been through the Woluwe school from early ages, the older is at university in the UK, the younger one is in S6 in the Swedish section.

My professional background is in international banking. Before that I spent time in consulting and the advertising industry. More recently I have also been involved in startups and other projects. Although I am British by origin, I have spent most of my life abroad – living in Switzerland and Australia as a child and then as an adult, studying and working in various different European countries. My wife is Swedish and I am delighted to also be a Swedish citizen.

The parents association plays a key role in the European schools, very different from a national school. Here we are key stakeholders; a voice in the decision making process on behalf of pupils and parents in forums as varied as education issues, pupil well-being, educational support and health and safety, to mention just a few. We are also responsible for running all the transport, catering and after-school activity services, which amounts to a small business in itself with a not insubstantial turnover. It's rewarding, engaging and also at times frustrating - but vital to maintain the great school and great school community that we all want.

I look forward to getting to know as many parents as possible over the coming year. Please get in touch if you have any issues you want to raise, or you just want a chat about the APEEE.



**Roberta Maggio** - [roberta.maggio@woluweboard.eu](mailto:roberta.maggio@woluweboard.eu)

Dear Parents,

For the third year in a row, I am very honoured to continue to be a part of the APEEE Board and to be able to actively contribute to providing our children with quality services.

Our experience over the past year has clearly shown the key importance of APEEE's activities. The services it provides, such as transport, the canteen and afterschool activities, far from being mere side shows in school life, are essential parts of the daily life of our children; they are fundamental to the balance and well-being of our children, and thereby also to the well-being and peace of mind of parents. I am the proud mother of two girls: one who attends P3 ITA and one who, hopefully, will join EEB2 in September. An Italian, I have lived in Hungary and Estonia before landing in Brussels in 2016, just in time to enrol my daughter at the European School.

Our school is big and challenging, and at the same time rich in opportunities, experiences, and uniquely open to the world: as such, the European School is a worthy project to believe in. Our children meet the world there every day, are able to learn from different cultures and traditions and enrich their lives by learning other languages. As a member of the Board, I would like to work towards ensuring that time spent at school is time spent for personal growth, affording our kids a vast range of opportunities to learn and grow within a safe and welcoming environment. This year I shall serve as the Vice-President for Administrative Services. I look forward to hearing from you any suggestions, ideas, and obviously any proposals that could lead to possible improvements. You can contact me. Many thanks for your trust!





## [Back to the Top](#)

*or click on the picture to come back to the Top page*



### Michael Teutsch - [michael.teutsch@woluweboard.eu](mailto:michael.teutsch@woluweboard.eu)

It is with great pleasure that this is now my second year as a member of the APEEE board!

The board has elected me this year as the vice-president for pedagogical issues - thank you for the trust put in me! My children are in the German language section, currently in S2 and S4. I work on school education issues, also in my job at the European Commission, DG Education, Youth, Sport and Culture.

Given this background, I am mainly interested in the discussions on pedagogical issues which the APEEE is involved in, for example on an effective way of using distance or blended learning approaches, support for learners with special needs, assessments, or teacher professional development.

Thank you already now for your constructive contributions, ideas and comments on how our association can help making our school an even better place for our children, as well as for parents and teachers!



### Vanessa Aulehla - [vanessa.aulehla@woluweboard.eu](mailto:vanessa.aulehla@woluweboard.eu)

I have been a parent at our school since 2004, and a board Member since 2017. My daughter received her High School Leaving diploma ("Bac") in 2018, and my son attends S6 ITA. Of mixed German, Italian, Austrian, Swiss background, I grew up in Germany and moved to Brussels in 1996, and since then have held various posts at the European Parliament

Since September 2019, I have served as the treasurer of the APEEE where my main role is to optimally organise, and implement, the Budget. This past year has been uniquely challenging and has demanded much careful attention, as ongoing real-time adjustments kept being called for, so as to make best use of the budget and maintain the services provided, while fully supporting our staff. Since the COVID crisis seems far from over yet, the same level of care will most likely be required over the next few months - but I fully trust that, given the selfless dedication of our team and the results-oriented approach of the board, all will be well.

I am also keenly interested in understanding and - whenever possible - contributing to ideas that may help to positively reform the syllabus, the teaching and assessment policies, in particular the baccalaureate; I shall work on these themes together with other board members and, through Interparents, with the Board of Governors and other related bodies and Working Groups.



## [Back to the Top](#)

*or click on the picture to come back to the Top page*



**Andrea Grgic** - [andrea.grgic@woluweboard.eu](mailto:andrea.grgic@woluweboard.eu)

This is my first year on the APEEE board and my second year in the school. I am happy to take responsibility for the management of our parents' association. Through teamwork we can achieve the greatest results, and I am a strong believer in our diverse volunteer community.

I am from Croatia and my spouse is Dutch. We have a daughter in the Dutch language section pre-primary and a young son who will be joining the school in due course. I am a lawyer at the European Commission with a background in equality and employment law.

Topics such as transparency, substantive equality, child protection and inclusion of vulnerable and minority children and families, are all of keen interest to me. I would like to contribute to the parents' association by setting up a legal working group using the volunteer expertise of our multicultural and multidisciplinary parent community.

I believe APEEE has an important and challenging role to play this year in starting and running services at the new Evere site. Transparent and open dialogue with the parent community is key to finding the best solutions. I also think we should keep close track of the plans for terrorist trials on the former NATO site, close to the new planned school. We must become actively involved and vocal about any security and wellbeing issues affecting children and act as the parents' voice at our school.

I believe in walking the talk which is why I decided to join the APEEE Board, although as a mother of a 1 year old infant, my hands are often full.

Please feel free to contact me should you have any ideas for the parents' association.



**Natalia Karpenko** - [natalia.karpenko@woluweboard.eu](mailto:natalia.karpenko@woluweboard.eu)

Dear parents,

This is my third year on the APEEE board where I represent the parents of the Dutch-speaking section. My children attend P4 in the Dutch-language section and P1 in the Italian section, thus our family is taking full advantage of the school's multicultural and multilingual environment.

My background is in literature studies and education. I translate books and have taught students of different ages, starting from nursery kids, all the way to university students. Among other things, I'm a replacement teacher at the European school at Ixelles at the moment, and I hope to be able to use my understanding of the European school system also in my work with APEEE.

Over the past years, I was very much involved in communications between APEEE and the broader parent community. Together with my colleagues in the Communications working group we've put out a few newsletters, conducted surveys, organized meetings for the school community, and endeavoured to keep in touch with individual parents. I'm happy that as of this year, our team has been strengthened with a permanent position at the secretariat: our APEEE communication officer. Also this year, we can rely on a fantastic group of parent volunteers in our working group and are looking forward to further improving communications between all of our community's stakeholders. I believe that sharing thoughts, ideas, experiences, being open to each other, getting to know each other better, respecting each other are key within any community, and most definitely so within the school community of our multicultural, multilingual European school. Please feel free to contact me on any school life related issues.



## [Back to the Top](#)

*or click on the picture to come back to the Top page*



### Bengt Davidsson - [bengt.davidsson@woluweboard.eu](mailto:bengt.davidsson@woluweboard.eu)

(Member of the Bureau. Interparents delegate. Coordinator Health & Safety & Security. Member of WG Transport, WG CEPM and WG Risk & Compliance. SV section)

Bengt has been a board member since 2017. He has one daughter in P2 and another one in S1. He represents the Swedish section.

This year I will carry on as coordinator for the working group on health and safety, which also includes wellbeing and security. Whereas providing the education that prepares children for their future lives as individuals and responsible members of society is the school's primary aim, it is also essential that this be delivered in a way that ensures that they remain safe and their wellbeing is assured. Otherwise, education quality would suffer and pupils would be negatively affected. APEEE therefore emphasizes health and safety at school.

Another area of keen interest to me is school transport and its greening. I am a passionate cyclist, appalled by the poor infrastructure for bikers around the Woluwe school, and will do my best to help bring about much-needed improvements.



### Tatiana Almeida - [tatiana.almeida@woluweboard.eu](mailto:tatiana.almeida@woluweboard.eu)

I joined the APEEE Board for the first time in January 2019, representing the Portuguese section. I am the proud mother of three girls (at P5, M2 as well as a future student).

The European schools are currently facing enormous challenges, from overcrowding to infrastructural issues, from pedagogical reform to adjusting to new technologies and a new generation of communications and interaction tools. I see it as my duty both as a mother and as a member of the school community to become engaged and participate actively in the ongoing debates about the school's present and future directions. The APEEE plays an essential part in promoting personal, academic and civic standards of excellence among the school community, and I am thrilled and honored to be able to contribute to this objective to the very best of my ability.

I am also particularly interested in the development of new inclusiveness strategies and policies for students with special needs. I participate in some of the horizontal APEEE Working Groups (such as the Canteen, Health Safety and Security, and Educational Support). As always, I would love to hear from you! Please feel free to contact me.





## [Back to the Top](#)

*or click on the picture to come back to the Top page*



### Ona Kostinaitė-Grinkevičienė -

[ona.KOSTINAITE-GRINKEVICIENE@woluweboard.eu](mailto:ona.KOSTINAITE-GRINKEVICIENE@woluweboard.eu)

This is my first year as an APEEE Board member, albeit my career as a parent at EEB2 began a few years ago when our daughter joined the nursery at the LT section.

Our children are facing challenging situations every day and today more than ever. As an APEEE Board member, within its competence I would like to try to transform these challenges into opportunities for our children.

My personal goals as an APEEE Board member are:

- contributing to ensuring a high level of education for our children
- making the CDE (Pupils' committee) a partner of APEEE
- liaising with parents for discussions on questions related to daily life at School



### Sebastian Guerrero - [sebastian.guerrero@woluweboard.eu](mailto:sebastian.guerrero@woluweboard.eu)

My name is Sebastian, but everybody calls me Seba.

I'm the father of 3 adorable little monsters and, like any proud father, I need to make sure that they receive the best possible education and become well-equipped to face the many challenges that this unpredictable world may throw at them in the future. Which prompted me to join the APEEE Board.

The educational system is currently facing enormous challenges, including the difficulty of adapting curricula in a timely fashion to the fast-changing needs of a very fluid world, where technology, consumption habits and job requirements move quickly.

I believe it is my duty as a father and as a member of the school community to become engaged and actively participate in the ongoing dialogue on the present and future of our school. APEEE plays a very important role in promoting personal and academic standards of excellence among the school community, and I am honoured to contribute to this objective.

I am also particularly interested in the development of new extracurricular activities related to STEAM (Science, Technology, Engineering, Arts and Math) and to the modernization of the APEEE's IT infrastructure (so we, as parents, can enjoy working within a fully modern organization). In addition, I participate in some of the horizontal APEEE IT, Extracurricular Activities and CEES working groups.

To ensure that we help parents become more involved with the school, I would love to hear from you! Please feel free to contact me.



## [Back to the Top](#)

*or click on the picture to come back to the Top page*



**Pim Gesquiere** - [pgesquiere@gmail.com](mailto:pgesquiere@gmail.com)

This is my first year on the APEEE board and my fifth year with the school. After living for 11 years in, variously, Eritrea, Zimbabwe and Namibia on 3 EU diplomatic postings, we returned to Brussels in September 2016. Our children are in P4 and S3 in the Dutch section.

During our postings abroad, our children experienced different educational systems, from Montessori schools to conventional schools.

Back in Europe, our children quickly blended into the European School system and made it their second home. The children in our school are blessed with a multicultural environment and skilled, dedicated and caring teachers. I am grateful for the resources we are given.

I have experience as a Head of Administration in Delegations and in Finance&Contracts. I also volunteer with youth groups such as the Scouts.

By joining the Board, I would like to contribute to a school where every child is happy and can blossom to his or her fullest extent.

In the European School system, parents have the privilege to become stakeholders in the schools' governance system. As Board members, we represent the parents.

Transparency is key in a parents' association. It constitutes the base of the mutual trust essential to any school community. I also believe in open discussion and listening to your ideas.

Feel free to contact me.



**Anna Grömer** - [anna.groemer@woluweboard.eu](mailto:anna.groemer@woluweboard.eu)

I am the mother of two children, in M2 and P5 in the German section.

I am very happy to have been elected by the class reps during the AGM.

I am a member of the Transport Working Group.

Please do not hesitate to contact me.



## [Back to the Top](#)

*or click on the picture to come back to the Top page*



**Szilvia Kalman** - [szilvia.kalman@woluweboard.eu](mailto:szilvia.kalman@woluweboard.eu)

This is my third year on the Board, where I represent the French section. I have two daughters in S3 and P5. I feel greatly honoured to work with the Board, together with so many dedicated parents, for the greater benefit of our children.

At the European Commission (DG EAC), I work in the field of education policy, and I therefore hold a special interest in how EU-level guidelines and recommendations can be implemented at school level. I believe that the European Schools should fully avail themselves of the expertise and good practices available at the EU level, thereby offering the best possible quality in education to all of its pupils, *inclusively*. By the same token, the well-being of our children matters just as much as academic performance, and I am convinced that under 'normal circumstances' these two goals are fully compatible and can both be achieved. However, the pandemic has brought unprecedented challenges to everyone in the school community, shifting the focus of our work with the school to one of crisis management.

Within the Board, I serve as the Secondary Pedagogical Working Group's coordinator, a channel whereby parents' voices can be fully heard by school management, via the CEES meetings. Our key concerns have included: maintaining the quality of education and the mental health of pupils; ensuring the continuity of education, including for those who may hail from more vulnerable families; importantly, preventing that the outlook for EEB2 students, in terms of their university admissions, be negatively affected by the pandemic. In this context, I am in particular dealing with issues such as the quality of distance learning; assessment and exams; the well-being of pupils; and digital education. I also contribute to the Board's work on educational support.



**Raquel Jimenez Lopez** - [raquel.jimenez-lopez@woluweboard.eu](mailto:raquel.jimenez-lopez@woluweboard.eu)

My child Noah attends S4 in the FR section.

It has been a year since I joined the APEEE Board, a year that has seemed to fly by quickly as many new challenges have arisen in the wake of the COVID crisis.

For this second year of mandate, I would like to work on issues related to Educational Support, together with those in charge of support at our school, but also with all the other working groups that deal with this issue within the school system generally (Interparents, APEEE's at the other European schools). It is essential that parents be kept informed on Educational Support policies in the European school system.

I also serve as a representative for the FR section, and remain gladly available to the parents of our section.



## [Back to the Top](#)

*or click on the picture to come back to the Top page*



**Catarina Duarte Gomes** - [catarina.duarte@woluweboard.eu](mailto:catarina.duarte@woluweboard.eu)

This is my first year on the APEEE board and I am representing the Portuguese section. I arrived in Brussels in 2012, after having lived in Paris and Lisbon for years.

I have two sons, one in S3 and one in P5 in the Portuguese section. I work at the European Parliament in the Communications field.

To be part of the APEEE means for me to be able to play an active role in the school's life and my sons' education.

As member of the board, I would like to improve communication and information between partners (school, parents, APEEE), help bring about a livelier APEEE website (via the IT working group) and help enable more interactive communications within the parents' community.

I also participate in the health, safety and security Working Group where the topic is the students' well-being. I am also engaged in the Secondary Pedagogical Affairs (CEES) working group and the Budget working group.



**Minna Melleri** - [minna.melleri@woluweboard.eu](mailto:minna.melleri@woluweboard.eu)

My name is Minna, representing the Finnish section for the 3<sup>rd</sup> straight year now. My three daughters are in grades P4, P3 and MAT1 at Woluwe.

I have worked in many European and national non-profit organisations, and am currently in charge of advocacy and growth at Junior Achievement (JA) Europe. My work focuses on developing entrepreneurial learning programmes in education systems across Europe, to ensure that young people have the right skills when they leave school and enter the world of work.

At APEEE, I hope that we can make progress this year towards zero-emission school buses, so that our transport service can set an example for green mobility in Brussels.

My other priorities as Coordinator of the Transport WG include continued monitoring of the Covid-19 pandemic's impact on transport and how transport must continue to adapt, as well as making the school bus service ready for the new Evere site from September.

I will also closely follow the European schools' enrolment policies. Collaboration with other APEEEs in Brussels is important to me, because I believe our associations face very similar challenges and we can gain a lot from working together and learning from each other.



[Back to the Top](#)

*or click on the picture to come back to the Top page*



**Christine Pyka** - [christine.pyka@woluweboard.eu](mailto:christine.pyka@woluweboard.eu)

Dear parents,

This is my first year on the APEEE board, and my fifth as a class representative. With one child in P2 and one in MAT the EEBII will remain a part of our everyday life for many years still, and I would like to make sure that during these key years, the pupils' well-being matters just as much as academic achievement.

I am particularly interested in the development of an inclusive school with strong support for children with learning difficulties, using an innovative approach for the APEEE services in the COVID19 context, and in initiatives leading to a more environment-friendly school.

I also serve as the contact person in the German section for the Primary and Nursery education Council, please feel free to contact me.



**Johanna Schulyok** - [johanna.schulyok@woluweboard.eu](mailto:johanna.schulyok@woluweboard.eu)

My two girls are in M2 and P1 in the Swedish section.

I joined the board this year from a desire to become more involved in their school and everyday life, and helping to make it as good as it can be.

My background is in Intellectual Property and Patents, and my husband's career brought us here. I'm now working with DG MOVE.

I've just taken on the role of coordinator at the nursery and primary education council (CEP&M) within the APEEE, and look forward to being active in the communication, canteen and health and safety working groups.

I'm happy to hear from you on any suggestions or questions you may have!





## [Back to the Top](#)

*or click on the picture to come back to the Top page*



**Kevin Smith** - [kevin.smith@woluweboard.eu](mailto:kevin.smith@woluweboard.eu)

I am new member of the APEEE board and very honoured to have been elected as one of the representatives for the English section.

I am British and my wife is Irish, we have a daughter in S4 and she was my motivation to join the APEEE board. I help along with the other board members and the class reps to ensure our children have the best experience possible in all aspects of school life.

My background is varied, I trained in electronics but have spent most of my working life in the world of electronics from design to manufacture, management and equipment. I have experience in product business management, development and finance and have served on the board of governors for a school in Belgium. I am currently working as an independent technical writer and website content management.

For me, the APEEE is a strategic part of the European school's structure and without it many of the things we as parents take for granted would not happen. I look forward to being part of this.



**Marjo Toivo** - [marjo.toivo@woluweboard.eu](mailto:marjo.toivo@woluweboard.eu)

This is my 2nd year on the Board. I have two daughters who attend P4 and P5 in the FL section. The older one began school in Finland. Secondary is already on our family's minds, because it is no longer in the distant future.

I hold an M. Sc. in Food Sciences. For a food microbiologist such as myself, this pandemic has been very informative: not only the news per se but many of its consequences and ramifications, such as the newly introduced legislation and regulations that must be followed.

Last year I was a member of CEP/M, Health, Safety and Security, Canteen and Compliance & risk assessment WGs and I carry on in all of them, for the latter as its coordinator. Safety is a key issue, close to my heart. I am a member of the Communication/Welcome Policy and Active Community/School community WGs as well. I look forward to working with the Board, and I am happy to use my professional skills to further our tasks in the best possible way.

Before Covid-19 I participated in volunteer work at the school: in the library in Primary, as a parent supervisor in the school trips, and in the 2nd hand book sale. It feels odd not to be able to visit the school at this time, but of course I fully understand the need for the mitigation measures in place. I am a class info representative, too, and, in that way, I feel a bit closer to the school work.

Please do not hesitate to contact me whenever you have something to ask. Let's keep in touch!



## [Back to the Top](#)

or click on the picture to come back to the Top page



David Zelinger - [david.zelinger@woluweboard.eu](mailto:david.zelinger@woluweboard.eu)

This is my first year on the APEEE board. My children are in the German language section, in P5, S2 and S5.

With a long experience as InfoRep and a background in media, I hope to be of help to the Association's evolving communication efforts. As communication is interlinked with technology, I am also a member of the IT working group.

As a board member, I will support user-friendly, pragmatic and hands-on solutions when it comes to interaction with parents. Multichannel approaches might help reaching out more effectively to the entire school community.

As a member of the CEES group, I will also keep an eye on issues related to educational and pedagogical quality, be it in the current hybrid teaching environment or after the gradual return to a "new normal", hopefully soon.

The Association has been doing a great job in general, and in particular in these unprecedented times. It deserves all our support towards upcoming challenges, such as the new site in Evere, which will soon become an integral part of our school community. Last but not least: I also joined the Interparents group because I believe that the different associations of the European Schools can learn from each other, and also join forces when needed.



Anna Yavorska - [anna.yavorska@woluweparents.org](mailto:anna.yavorska@woluweparents.org)

I am the parent of a pupil in the S3 English section. As a class rep, I enjoyed wonderful cooperation with the school and the parents for many years.

After a year on the Apeee board, I strongly believe that the parents' association can, and must, play a key role in helping school management identify and jointly solve the issues our children face. Only by working as a team will school, parents and children achieve success.

I would like to particularly focus, and further raise awareness within the school on *neurodiversity*. Just like Greta or many other neurodivergent children, such children can think outside the box and become a valuable part of any school community. Through discussions involving international experts and among school community members, we should share knowledge as to how we can help neurodiverse children blossom and reach their full potential. I would like to see more understanding that educating and upbringing these special "flowers" in a conducting environment is not an expense, but rather an investment into a more creative and colorful future.

I also deeply care about children's online safety. We invest much money into technology, yet very little in our children's knowledge and education on how to use such technology wisely and safely. To drive a car the rules of the road must be learnt first, and a driving license then provides a measure of insurance towards our and others' safety. The online world is however more complicated than road traffic, its signposts keep changing, and parents must keep their knowledge up-to-date, engage in continuous dialogue, and pool resources to keep on top of developments.

If you also feel passionate about these topics, please connect with me so that we can join forces.